



# TOWN OF ENOSBURGH Zoning Map



Vermont Coordinate System  
Transverse Mercator, NAD 83.  
For planning purposes only.

Prepared by:  
Northwest Regional  
Planning Commission  
155 Lake Street  
St. Albans, VT 05478  
802.524.5958  
www.nrpvt.com  
May, 2013.

## Legend

### Zoning Districts

- Village of Enosburg Falls
- Agricultural Zone
- Rural Residential Zone
- Conservation Zone
- Groundwater Source Protection Area Zone

### Overlay Zoning Districts

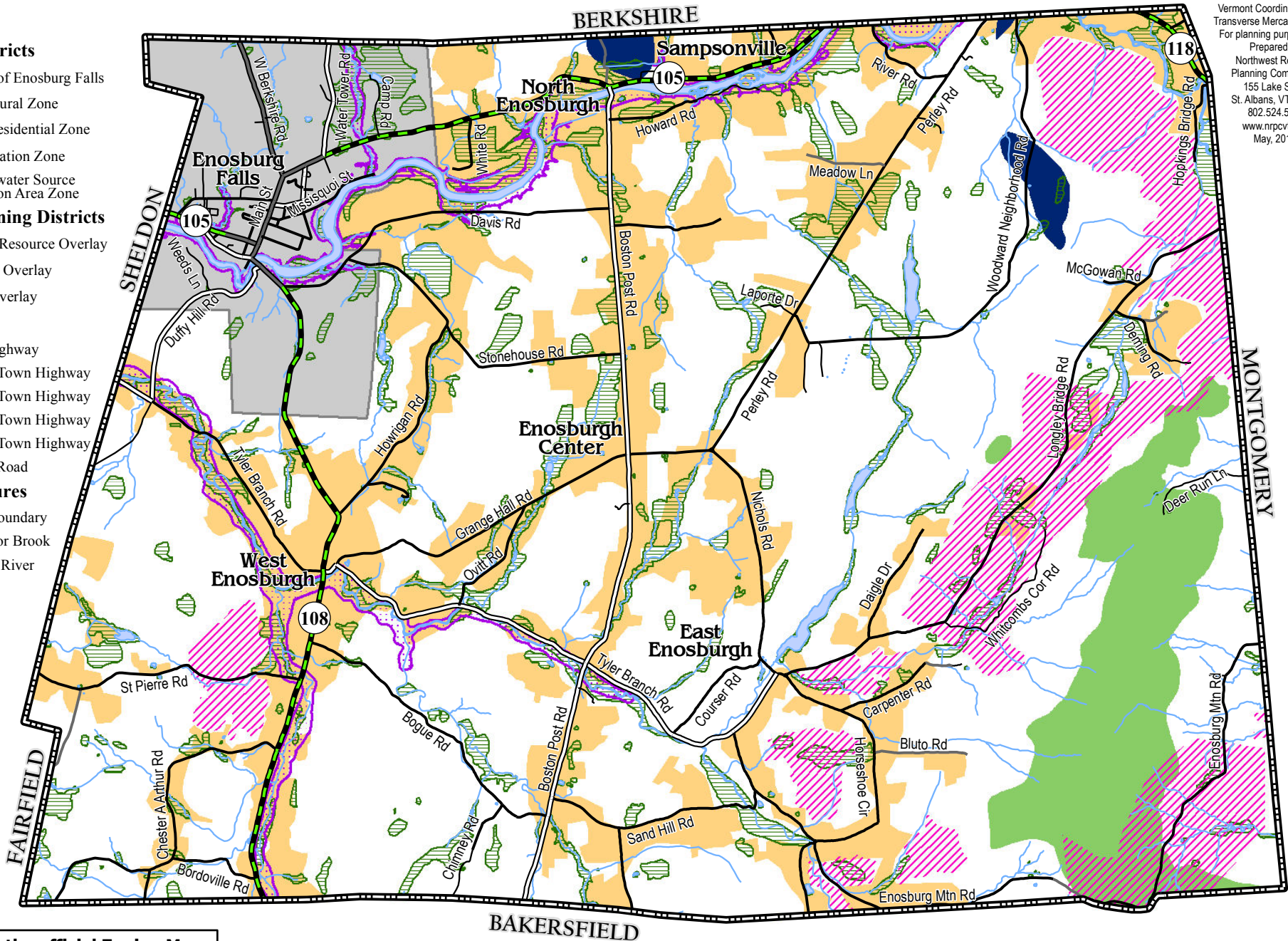
- Natural Resource Overlay
- Wetland Overlay
- Flood Overlay

### Roads

- State Highway
- Class 1 Town Highway
- Class 2 Town Highway
- Class 3 Town Highway
- Class 4 Town Highway
- Private Road

### Other Features

- Town Boundary
- Stream or Brook
- Pond or River



**This is not the official Zoning Map.  
The official signed version is on file  
at the town clerk's office.**

